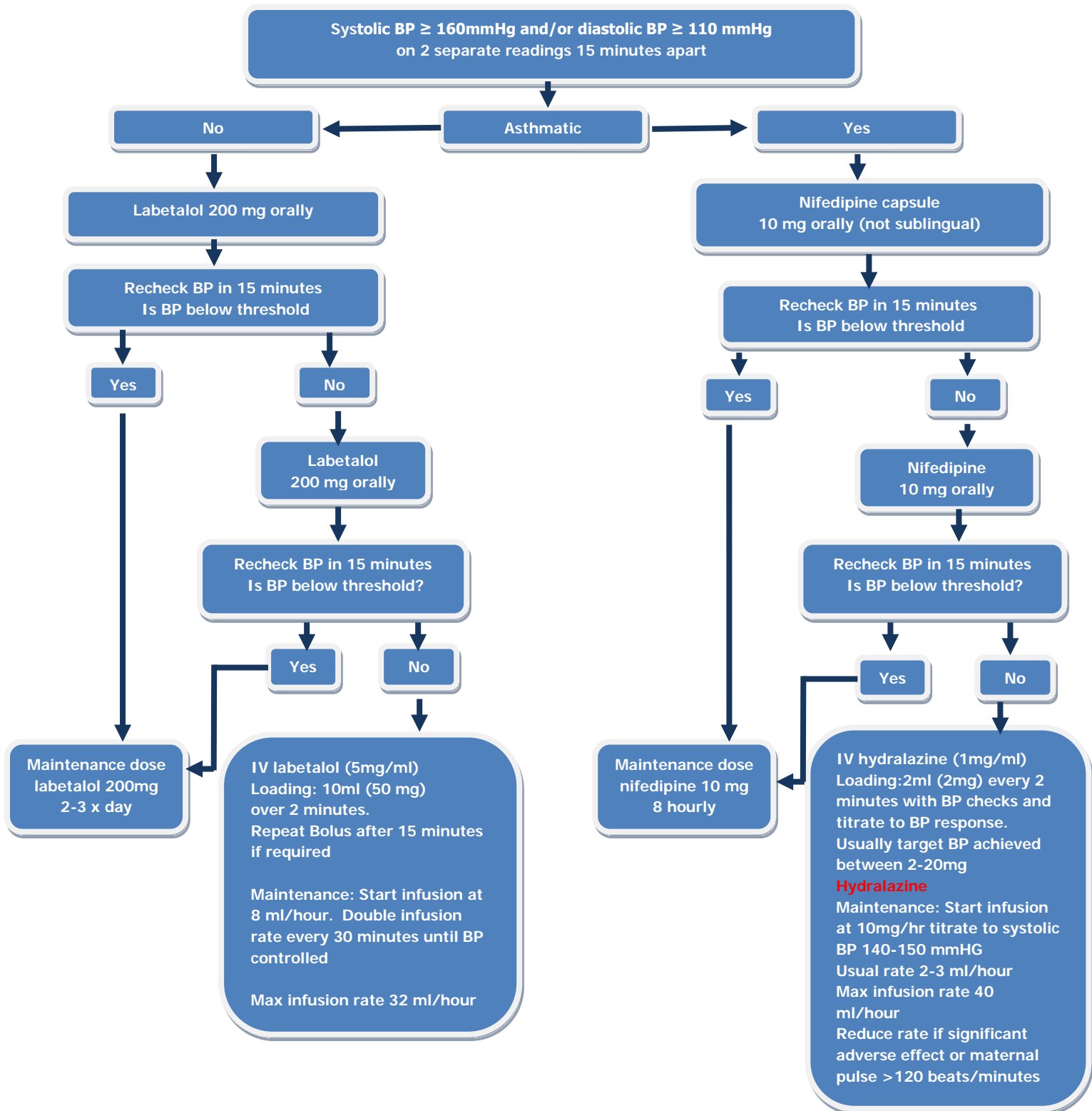


Treatment of Severe Hypertension (IV Therapy may be used first line)

Also see pages 6-7 Hydralazine Guidelines (may be used as first line in asthmatics)



Aim to keep BP  $\leq$  135/85 mmHg  
Caution: All three drugs have cumulative effect (peak at 30 minutes) and all three interact with magnesium sulphate.  
**Nifedipine also increases the muscular blockage of magnesium sulphate.**